

Red Thread & Green Thread™ HP 35 Epoxy Fittings

(Filament wound with reinforced epoxy inner liner - Compatible with Red Thread and Green Thread HP 35 piping systems)



Fitting Data

Fittings are filament wound with epoxy resin and a reinforced epoxy liner. Compatible with Red Thread or Green Thread HP35, 500 psi piping systems. PSX- Series 20, 48 or 60 adhesives are required for joint assembly.

90° Elbow

(Bell x Bell)

Pipe Size		A		$\chi^{(1), (2)}$	
in	mm	in	mm	in	mm
8	200	21.75	552	7.75	197
10	250	26.00	660	8.88	225
12	300	30.50	775	10.25	260
14	350	33.00	838	8.75	222
16	400	37.00	940	10.00	254
18	450	41.50	1054	10.52	267
20	500	46.75	1187	12.32	313
24	600	56.25	1429	15.61	397

45° Elbow

(Bell x Bell)

Pipe Size		A		$\chi^{(1), (2)}$	
in	mm	in	mm	in	mm
8	200	14.75	375	7.75	197
10	250	17.00	432	8.88	225
12	300	20.00	508	10.25	260
14	350	20.75	527	8.75	222
16	400	23.00	584	10.00	254
18	450	25.68	652	10.52	267
20	500	29.18	741	12.32	313
24	600	35.16	893	15.61	397

Tees

(Bell x Bell x Bell)

Pipe Size		A		$\chi^{(1), (2)}$	
in	mm	in	mm	in	mm
8	200	15.75	400	7.75	197
10	250	18.50	470	8.88	225
12	300	20.50	521	10.25	260
14	350	22.50	521	8.75	222
16	400	24.50	622	10.00	254
18	450	27.13	689	10.52	267
20	500	30.75	781	12.32	313
24	600	34.25	870	15.61	397

Sleeve Coupling

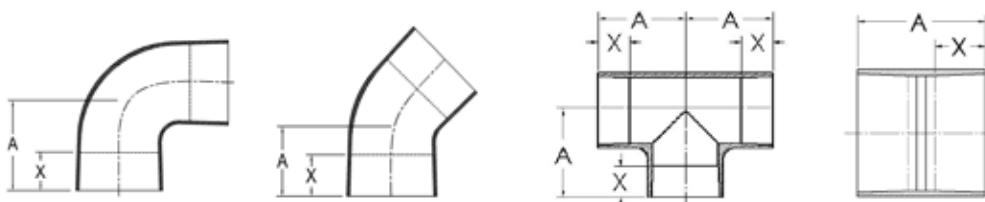
(Bell x Bell)

Pipe Size		A		$\chi^{(1), (2)}$	
in	mm	in	mm	in	mm
8	200	18.50	470	7.75	197
10	250	20.75	527	8.88	225
12	300	24.00	610	10.25	260
14	350	25.00	635	8.75	222
16	400	27.25	692	10.00	254
18	450	30.50	775	10.52	267
20	500	35.00	889	12.32	313
24	600	42.00	1067	15.61	397

¹⁾ Nominal make-up dimension for drawing layout work only. Do not use for assembly dimensions.

²⁾ When using PSX-20 or PSX-48 adhesives the wet and dry ad make up are equal.

View of Fitting Illustrations



90° Elbow

45° Elbow

Tee

Sleeve Coupling

Van Stone Flanges

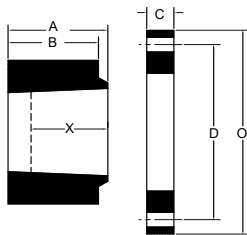
(ANSI B16.5 Class 300)

Pipe Size		A		B		C		D		O		X ^{(1), (2)}		Bolt Size		Bolt Qty	Max. Bolt Torque	
in	mm	in	mm	in	mm	in	mm	in	mm	in	mm	in	mm	in	mm	bolts	ft-lbs	N-m
8	200	5.00	127	4.75	121	1.50	38	13.00	330	15.00	381	5.00	124	1.00	25	12	200	272
10	250	6.25	159	6.00	152	1.88	48	15.25	387	17.50	445	6.00	156	1.13	28	16	200	272
12	300	7.50	191	7.25	184	1.88	48	17.75	451	20.50	521	7.50	187	1.25	31	16	200	272
14	350	7.00	178	6.50	165	2.25	57	20.25	514	23.00	584	7.00	175	1.25	31	20	250	340
16	400	7.88	200	7.38	187	2.25	57	22.50	572	25.50	648	7.75	197	1.38	35	20	250	340
18	450	9.00	229	8.50	216	2.25	57	24.75	629	28.00	711	8.37	213	1.38	35	24	450	610
20	500	9.88	251	9.38	238	2.25	57	27.00	686	30.50	775	10.02	255	1.38	35	24	450	610
24	600	10.75	273	11.25	286	2.50	64	32.00	813	36.00	914	12.83	326	1.63	41	24	450	610

⁽¹⁾ Nominal make-up dimension for drawing layout work only. Do not use for assembly dimensions.

⁽²⁾ When using PSX-20 or PSX-48 adhesives the wet and dry ad make up are equal.

View of Fitting Illustrations



Van Stone Flanges

National Oilwell Varco has produced this brochure for general information only, and it is not intended for design purposes. Although every effort has been made to maintain the accuracy and reliability of its contents, National Oilwell Varco in no way assumes responsibility for liability for any loss, damage or injury resulting from the use of information and data herein nor is any warranty expressed or implied. Always cross-reference the bulletin date with the most current version listed at the web site noted in this literature.

Fiber Glass Systems

17115 San Pedro Avenue, Ste 200
 San Antonio, Texas 78232 USA
 Phone: 210 477 7500
 Fax: 210 477 7560

© 2018 National Oilwell Varco All Rights Reserved
 C11375ENG October 2018