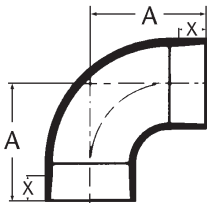


GREEN THREAD™ HP 32/40 Fittings

2"-16" Fittings and Accessories

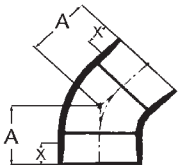
Fittings are filament wound with a reinforced epoxy inner liner and compatible with HP 32/40 bar piping systems. Sizes 2"-12" are rated to 40 bar, and 14" and 16" are rated to 32 bar

90° Elbows Bell x Bell



Diameter		A		X ⁽¹⁾		Weight	
in	mm	in	mm	in	mm	lbs	kg
2	50	6.25	159	2.50	64	8.0	3.6
3	75	9.00	229	3.25	83	12.0	5.4
4	100	11.25	286	4.00	102	16.0	7.3
6	150	14.75	375	4.50	114	24.0	10.9
8	200	21.75	552	7.75	197	46.3	21.0
10	250	26.00	660	8.88	225	92.6	42.0
12	300	30.50	775	10.25	260	140	63.5
14	350	33.00	838	8.75	222	447	203
16	400	37.00	940	10.00	254	587	267

45° Elbows Bell x Bell

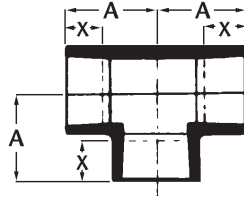


Diameter		A		X ⁽¹⁾		Weight	
in	mm	in	mm	in	mm	lbs	kg
2	50	4.50	114	2.50	64	13.7	6.2
3	75	6.25	159	3.25	83	17.1	7.8
4	100	7.75	197	4.00	102	27.5	12.5
6	150	9.50	241	4.50	114	32.7	14.9
8	200	14.75	375	7.75	197	92.5	42.0
10	250	17.00	432	8.88	225	145	65.8
12	300	20.00	508	10.25	260	200	90.7
14	350	20.75	527	8.75	222	235	107
16	400	23.00	584	10.00	254	309	140

⁽¹⁾ This is a nominal make-up dimension for drawing layout work only. Do not use for assembly dimensions.

Tees

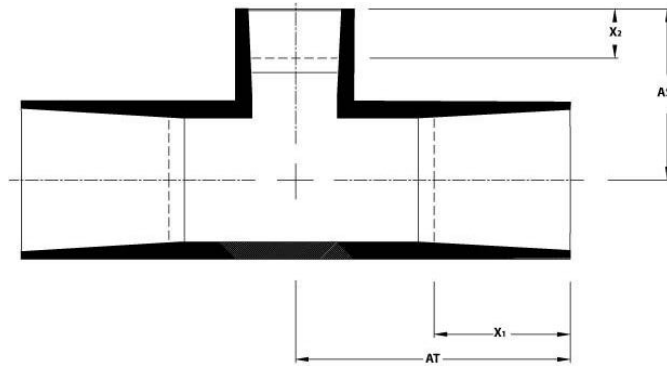
Bell x Bell x Bell



Diameter		A		X ⁽¹⁾		Nominal Weight	
in	mm	in	mm	in	mm	lbs	kg
2	50	5.50	140	2.50	64	13.7	6.2
3	75	7.25	184	3.25	83	20.5	9.3
4	100	9.00	229	4.00	102	27.3	12.4
6	150	11.50	292	4.50	114	55.7	25.3
8	200	15.75	400	7.75	197	119	53.9
10	250	18.50	470	8.88	225	164	74.4
12	300	20.50	521	10.25	260	258	117
14	350	22.50	571	8.75	222	352	160
16	400	24.50	622	10	254	440	200

Reducing Tees

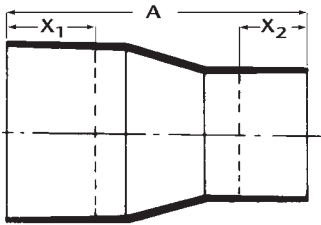
Bell x Bell x Bell



Diameter		AT		AS		X ₁ ⁽¹⁾		X ₂ ⁽¹⁾	
in	mm	in	mm	in	mm	in	mm	in	mm
3x2	75x50	7.19	183	7.01	178	3.25	83	2.50	64
4x3	100x75	8.87	225	8.45	215	4.00	102	3.25	83
4x2	100x50	8.87	225	7.48	190	4.00	102	2.50	64
6x4	150x100	11.50	292	10.39	264	4.50	114	4.00	102
6x3	150x75	11.50	292	9.51	242	4.50	114	3.25	83
8x6	200x150	15.75	400	12.25	311	7.75	197	4.50	114
8x4	200x100	15.75	400	11.75	298	7.75	197	4.00	102
10x8	250x200	18.38	467	17.75	451	8.87	225	7.75	197
10x6	250x150	18.38	467	13.75	349	8.87	225	4.50	114
12x10	300x250	20.50	521	20.38	518	10.25	260	8.87	225
12x8	300x200	20.50	521	19.25	489	10.25	260	7.75	197
14x12	350x300	22.50	571	22.52	572	8.75	222	10.25	260
14x10	350x250	22.50	571	20.90	531	8.75	222	8.75	222
16x14	400x350	24.38	619	23.03	585	9.75	251	8.75	222
16x12	400x300	24.38	619	23.53	598	9.75	251	10.25	260

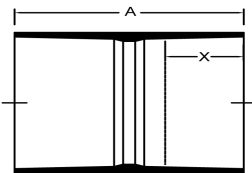
⁽¹⁾Nominal make-up dimension for drawing layout work only. Do not use for assembly dimensions.

Concentric Reducer Bell x Bell



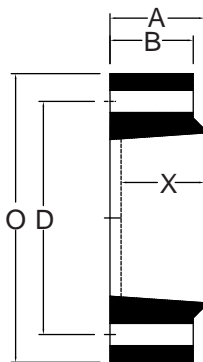
Diameter		A		X ₁ ⁽¹⁾		X ₂ ⁽¹⁾		Weight	
in	mm	in	mm	in	mm	in	mm	lbs	kg
3x2	75x50	9.25	235	3.25	83	2.50	64	8.1	3.7
4x3	100x75	11.75	298	4.00	102	3.25	83	11.7	5.3
6x4	150x100	15.00	381	4.50	114	4.00	102	15.4	7.0
8x6	200x150	21.00	533	7.75	167	4.50	114	27.0	12.2
10x8	250x200	26.00	660	8.875	229	7.75	167	44.5	20.2
12x10	300x250	29.75	756	10.25	261	8.875	225	69.4	31.5
14x12	350x300	32.75	834	8.875	225	10.25	261	107	48.4
16x14	400x350	35.75	906	10.00	254	8.75	222	154	70.1

Sleeve Couplings Bell x Bell



Diameter		A		X ⁽¹⁾		Weight	
in	mm	in	mm	in	mm	lbs	kg
2	50	6.50	161	2.50	64	0.9	0.4
3	75	8.00	203	3.25	83	1.9	0.8
4	100	9.50	241	4.00	102	2.0	0.9
6	150	10.50	266	4.50	114	4.4	2.0
8	200	18.50	470	7.75	197	11.5	5.2
10	250	20.75	527	8.88	225	17.6	8.0
12	300	24.00	610	10.25	260	25.4	11.5
14	350	25.00	635	8.75	222	156	71.0
16	400	27.25	692	10.00	254	206	93.4

Flanges ANSI 16.5 Class #150



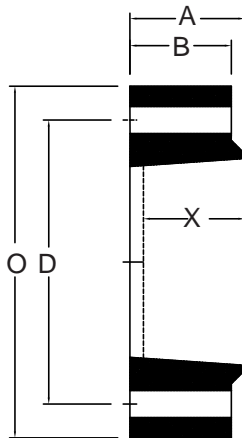
Diameter	A	B	D	O	X ⁽¹⁾	Bolt Size & Quantity		Max Bolt Torque	Wgt.
						in	Bolts		
2	3.00	2.75	4.75	6.00	2.75	0.75	4	100	4.75
3	3.25	3.00	6.00	7.50	3.00	0.75	4	100	7.5
4	3.75	3.50	7.50	9.00	3.50	0.75	8	150	11.9
6	4.25	4.00	9.50	11.00	4.00	0.88	8	150	17.4

Diameter	B	C	D	O	X ⁽¹⁾	Bolt Size & Quantity		Max Bolt Torque	Wgt.
						mm	Bolts		
50	74	70	121	152	70	19.0	4	136	2.2
75	82	76	152	190	76	19.0	4	136	3.4
100	95	89	191	228	89	19.0	8	204	5.4
150	107	100	241	279	101	22.2	8	204	7.9

⁽¹⁾ This is a nominal make-up dimension for drawing layout work only. Do not use for assembly dimensions.

Flanges

ANSI 16.5
Class #300

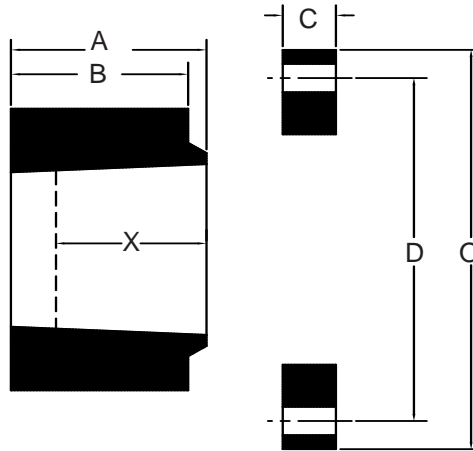


Diameter	A	B	D	O	X ⁽¹⁾	Bolt Size & Quantity		Max Bolt Torque	Wgt.
in	in	in	in	in	in	in	Bolts	ft • lbs	lbs
2	3.00	2.75	5.00	6.50	2.75	0.75	8	100	5.4
3	3.25	3.00	6.63	8.25	3.00	0.88	8	100	9
4	3.75	3.50	7.88	10.00	3.50	0.88	8	150	16
6	4.25	4.00	10.63	12.50	4.00	0.88	12	150	25.5

Diameter	A	B	D	O	X ⁽¹⁾	Bolt Size & Quantity		Max Bolt Torque	Wgt.
mm	mm	mm	mm	mm	mm	mm	Bolts	N • M	kg
50	74	70	127	165	68	19	8	136	2.5
75	82	76	168	210	75	22	8	136	4.1
100	95	89	200	254	89	22	8	204	7.1
150	107	100	270	317	101	22	12	204	11.6

Van Stone Flanges

ANSI 16.5
Class #300



⁽¹⁾Nominal make-up dimension for drawing layout work only. Do not use for assembly dimensions.

Diameter	A	B	C	D	O	X ⁽¹⁾	Bolt Size & Quantity		Max Bolt Torque	Wgt.
in	in	in	in	in	in	in	in	Bolts	ft • lbs	lbs
8	5.00	4.75	1.50	13.00	15.00	5.00	1.00	12	200	50.7
10	6.25	6.00	1.88	15.25	17.50	6.00	1.125	16	200	78.4
12	7.50	7.25	1.88	17.75	20.50	7.50	1.25	16	200	113
14	7.00	6.50	2.25	20.25	23.00	7.00	1.25	20	250	130
16	7.88	7.38	2.25	22.50	25.50	7.75	1.375	20	250	174
mm	mm	mm	mm	mm	mm	mm ⁽¹⁾	mm	Bolts	N • m	kg
200	127	121	38	330	381	124	25	12	272	23.0
250	159	152	48	387	445	156	28	16	272	35.6
300	191	184	48	451	521	187	31	16	272	51.3
350	178	165	57	514	584	175	31	20	340	58.9
400	200	187	57	572	648	197	35	20	340	78.9

National Oilwell Varco has produced this brochure for general information only, and it is not intended for design purposes. Although every effort has been made to maintain the accuracy and reliability of its contents, National Oilwell Varco in no way assumes responsibility for liability for any loss, damage or injury resulting from the use of information and data herein nor is any warranty expressed or implied. Always cross-reference the bulletin date with the most current version listed at the web site noted in this literature.