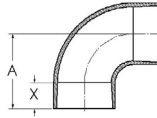


# Epoxy HP 16 Large Diameter Fittings (232 psi unless noted)

## Standard 90° Elbows

Bell x Bell

Nominal Size		A		X <sup>(1)</sup>		Nom. Weight	
in	mm	in	mm	in	mm	lbs	kg
18	450	21.75	552	8.00	203	140	64
20	500	25.25	641	9.13	232	200	91
24	600	29.00	737	10.00	270	250	114
30	750	36.50	927	13.90	352	450	204
36	900	43.50	1,005	16.80	428	800	364



## Long Radius 90° Elbows

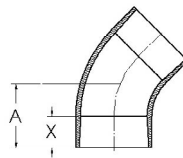
Bell x Bell, Long Radius 1.5D

Nominal Size		A		X <sup>(1)</sup>		Nom. Weight	
in	mm	in	mm	in	mm	lbs	kg
18	450	36.75	934	8.0	203	167	76
20	500	42.25	1,073	9.13	232	225	102
24	600	50.00	1,270	10.00	270	258	117

## Standard 45° Elbows

Bell x Bell

Nominal Size		A		X <sup>(1)</sup>		Nom. Weight	
in	mm	in	mm	in	mm	lbs	kg
18	450	14.75	375	8.00	203	100	45
20	500	17.63	448	9.13	232	140	64
24	600	20.19	513	10.00	270	200	91
30	750	24.80	629	13.90	352	375	170
36	900	29.40	748	16.80	428	700	318
42	1,050	35.30	895	18.70	476	1,100	500



## Long Radius 45° Elbows

Bell x Bell, Long Radius 1.5D

Nominal Pipe Size		A		X <sup>(1)</sup>		Nominal Weight	
in	mm	in	mm	in	mm	lbs	kg
18	450	20.93	531.7	8.0	203	100	45
20	500	24.68	626.8	9.13	232	135	61
24	600	28.91	734.4	10.00	270	155	70

## 30° Elbows

Bell x Bell

Nominal Size		A		X <sup>(1)</sup>		Nom. Weight	
in	mm	in	mm	in	mm	lbs	kg
30	750	21.90	555	13.90	352	300	136
36	900	25.90	659	16.80	428	600	272
42	1050	30.60	777	18.70	476	950	431

## 22.5° Elbows

Bell x Bell

Nominal Size		A		X <sup>(1)</sup>		Nom. Weight	
in	mm	in	mm	in	mm	lbs	kg
30	750	20.50	520	13.90	352	250	113
36	900	24.30	617	16.80	428	525	238
42	1050	31.90	811	18.70	476	800	363

## 11.25° Elbows

Bell x Bell

Nominal Size		A		X <sup>(1)</sup>		Nom. Weight	
in	mm	in	mm	in	mm	lbs	kg
30	750	19.10	484	13.90	352	225	102
36	900	22.30	567	16.80	428	450	204
42	1050	28.20	716	18.70	476	675	306

<sup>(1)</sup>This is a nominal make-up dimension for drawing layout work only. Do not use for assembly dimensions.

NOTE: The pressure rating for 30" and 36" diameter fittings is 14.7 bar in accordance to ISO 14692.

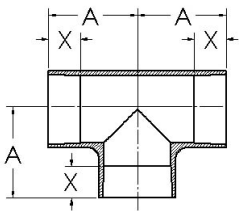
The pressure rating for 42" diameter fittings is 12.7 bar in accordance to ISO 14692.

[www.fgspipe.com](http://www.fgspipe.com) • [fgspipe@nov.com](mailto:fgspipe@nov.com)

**NOV** Fiber Glass Systems

## Tees

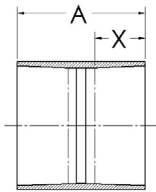
### Bell x Bell x Bell



Nom. Size		A		X <sup>(1)</sup>		Nom. Weight	
in	mm	in	mm	in	mm	lbs	kg
18	450	22.38	568	8.00	203	320	145
20	500	26.25	667	9.13	232	360	163
24	600	28.00	711	10.00	254	450	204
30	750	36.50	927	13.90	352	750	340
36	900	40.50	1,028	16.80	428	1,200	545

## Sleeve Couplings

### Bell x Bell



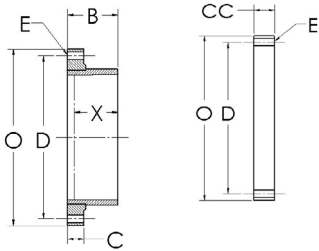
Nom. Size		A		X <sup>(1)</sup>		Nom. Weight	
in	mm	in	mm	in	mm	lbs	kg
18	450	21.00	533	8.0	203	51	23
20	500	26.00	660	9.1	231	76	35
24	600	29.50	749	10.0	254	122	55
30	750	35.00	889	13.9	353	200	91
36	900	41.00	1,041	16.8	427	320	145
42	1,050	46.00	1,168	18.7	475	500	227

NOTE: If coupling length "A" is critical for a piping system design, please specify "A" dimension when ordering as couplings are random length.

## Flanges

Filament Wound (FW)  
ANSI B16.5  
Class 150

Blind Flange  
ANSI B16.5  
Class 150



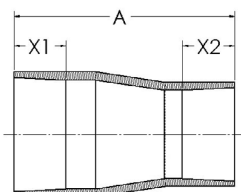
Nom. Size	B	C	CC	D	E Bolt Hole Size Number of Bolts	O	FW Flange X <sup>(1)</sup>	Bolt Torque	FW Flange Wt.	Blind Flange Wt.
in	in	in	in	in	in	in	in	ft * lbs	lbs	Blind
18	9.00	2.75	2.50	22.75	1.25 - 16	25.00	6.75	100	76	125
20	11.00	2.75	2.75	25.00	1.25 - 20	27.50	7.75	100	92	140
24	13.00	3.00	3.31	29.50	1.38 - 20	32.00	9.50	100	124	155

mm	mm	mm	mm	mm	mm	mm	mm <sup>(1)</sup>	n * m	kg	kg
450	229	70	64	578	32 - 16	635	171	136	35	57
500	279	70	70	635	32 - 20	699	197	136	42	64
600	330	75	84	749	35 - 20	813	241	136	56	70

<sup>(1)</sup>This is a nominal make-up dimension for drawing layout work only. Do not use for assembly dimensions.

## Concentric Reducers

### Bell x Bell

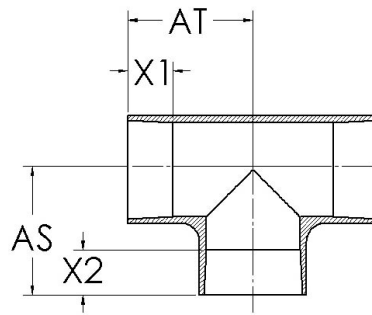


Nom. Size		A		X <sub>1</sub> <sup>(1)</sup>		X <sub>2</sub> <sup>(1)</sup>		Nom. Weight	
in	mm	in	mm	in	mm	in	mm	lbs	kg
18 x 16	450 x 400	28.75	730	8.00	203	6.75	171	110	50
20 x 18	500 x 450	32.00	813	9.13	232	8.00	203	140	64
24 x 20	600 x 500	46.25	1,175	10.00	254	9.13	232	190	86
30 x 24	750 x 600	50.50	1283	13.90	352	17.10	434	300	136
36 x 30	900 x 750	56.00	1422	16.80	428	13.90	352	450	205
42 x 36	1,050 x 900	61.50	1562	18.70	476	16.80	428	750	340

<sup>(1)</sup>This is a nominal make-up dimension for drawing layout work only. Do not use for assembly dimensions.

NOTE: The pressure rating for 30" and 36" diameter fittings is 14.7 bar in accordance to ISO 14692.  
The pressure rating for 42" diameter fittings is 12.7 bar in accordance to ISO 14692.

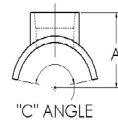
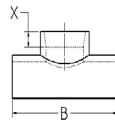
## Reducing Tees



Nom. Size	AT	AS	X <sub>1</sub> <sup>(1)</sup>	X <sub>2</sub> <sup>(1)</sup>	Nom. Wgt.
in	in	in	in	in	lbs
18 x 14	22.38	20.50	8.00	6.38	280
18 x 16	22.38	21.00	8.00	6.63	300
20 x 16	26.25	22.50	9.13	6.63	320
20 x 18	26.25	22.75	9.13	8.00	340
24 x 18	28.00	25.25	10.00	8.00	400
24 x 20	28.00	27.75	10.00	9.13	420

Nom. Size	AT	AS	X <sub>1</sub> <sup>(1)</sup>	X <sub>2</sub> <sup>(1)</sup>	Nom. Wgt.
mm	mm	mm	mm	mm	kg
450 x 350	568	521	203	162	127
450 x 400	568	533	203	168	136
500 x 400	667	572	232	168	145
500 x 450	667	578	232	203	154
600 x 450	711	641	254	203	182
600 x 500	711	705	254	232	191

## Saddles



Nom. Size	A	B	C	X <sub>1</sub> <sup>(1)</sup> W/RT Pipe	X <sub>1</sub> <sup>(1)</sup> W/GT Pipe
in	in	in	Degree	in	in
18 x 2	12.75	13	90	1.62	1.62
18 x 3	13.25	15	90	1.75	1.87
20 x 2	13.75	13	90	1.62	1.62
20 x 3	14.25	15	90	1.75	1.87
24 x 2	16.00	13	70	1.62	1.62
24 x 3	16.25	15	70	1.75	1.87

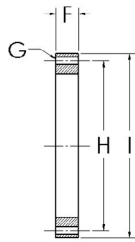
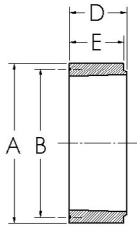
Nom. Size	A	B	C	X <sub>1</sub> <sup>(1)</sup> W/RT Pipe	X <sub>1</sub> <sup>(1)</sup> W/GT Pipe
mm	mm	mm	Degree	mm	mm
450 x 50	324	330	90	41	41
450 x 75	381	381	90	44	48
500 x 50	349	330	90	41	41
500 x 75	362	381	90	44	48
600 x 50	406	330	70	41	41
600 x 75	413	381	70	44	48

<sup>(1)</sup>This is a nominal make-up dimension for drawing layout work only. Do not use for assembly dimensions.

NOTE: The pressure rating for 30" and 36" diameter fittings is 14.7 bar in accordance to ISO 14692.  
The pressure rating for 42" diameter fittings is 12.7 bar in accordance to ISO 14692.

## Van Stone Flanges

ANSI B16.5  
Class 150 (18"-24")  
ANSI B16.1  
Class 125 (30"-42")



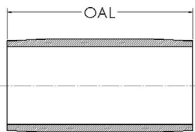
Nom. Size	A	B	X <sup>(1)</sup>	D	E	F	G	H	I	Bolt Torque	Nom. Wt. Hub	Nom. Wt. Bolt Ring
in	in	in	in	in	in	in	in	in	in	ft * lbs	lbs	lbs
18	21.44	19.92	7.50	9.00	8.50	2.25	1.25	22.75	25.00	200	39	98
20	23.69	21.92	8.50	9.88	9.38	2.25	1.25	25.00	27.50	200	53	114
24	28.06	25.90	10.00	11.75	11.25	2.25	1.38	29.50	32.00	200	79	140
30	34.63	N/A	10.00	10.00	9.50	2.25	1.38	36.00	38.75	400	121	192
36	41.05	N/A	13.00	13.00	12.50	2.25	1.63	42.75	46.00	400	208	270
42	47.80	N/A	19.50	19.50	19.00	3.00	1.63	49.50	53.00	400	440	445

mm	mm	mm	mm	mm	mm	mm	mm	mm	mm	N * m	kg	kg
450	545	506	191	229	216	57	32	578	635	297	18	44
500	602	557	216	251	238	57	32	635	699	297	24	52
600	713	658	254	298	286	57	30	749	813	297	36	64
750	880	N/A	254	254	241	57	30	914	984	372	55	87
900	1043	N/A	330	330	318	57	41	1,086	1,168	446	94	122
1,050	1214	N/A	495	495	483	76	41	1,257	1,346	446	200	202

<sup>(1)</sup>All 18" - 42" (450-1050 mm) Van Stone Flanges will have to be custom fit to spigot.

Zinc Plated Steel Bolt Ring

## Nipples



✓ Standard Length

Nom. Pipe Size		24"	36"	42"
in	mm	600 mm	900 mm	1,050 mm
18	450	✓	✓	
20	500	✓	✓	
24	600		✓	
30	750		✓	
36	900			✓
42	1050			✓

NOTE: The pressure rating for 30" and 36" diameter fittings is 14.7 bar in accordance to ISO 14692.  
The pressure rating for 42" diameter fittings is 12.7 bar in accordance to ISO 14692.

National Oilwell Varco has produced this brochure for general information only, and it is not intended for design purposes. Although every effort has been made to maintain the accuracy and reliability of its contents, National Oilwell Varco in no way assumes responsibility for liability for any loss, damage or injury resulting from the use of information and data herein nor is any warranty expressed or implied. Always cross-reference the bulletin date with the most current version listed at the web site noted in this literature.

*North America*  
17115 San Pedro Ave. Suite 200  
San Antonio, Texas 78232 USA  
Phone: 210 477 7500

*South America*  
Avenida Fernando Simoes  
Recife, Brazil 51020-390  
Phone: 55 31 3501 0023

*Europe*  
P.O. Box 6, 4190 CA  
Geldermalsen, The Netherlands  
Phone: 31 345 587 587

*Asia Pacific*  
No. 7A, Tuas Avenue 3  
Jurong, Singapore 639407  
Phone: 65 6861 6118

*Middle East*  
P.O. Box 17324  
Dubai, UAE  
Phone: 971 4881 3566

[www.fgspipe.com](http://www.fgspipe.com) • [fgspipe@nov.com](mailto:fgspipe@nov.com)

**NOV Fiber Glass Systems**

© 2013 National Oilwell Varco. All rights reserved.  
C11351ENG November 2014