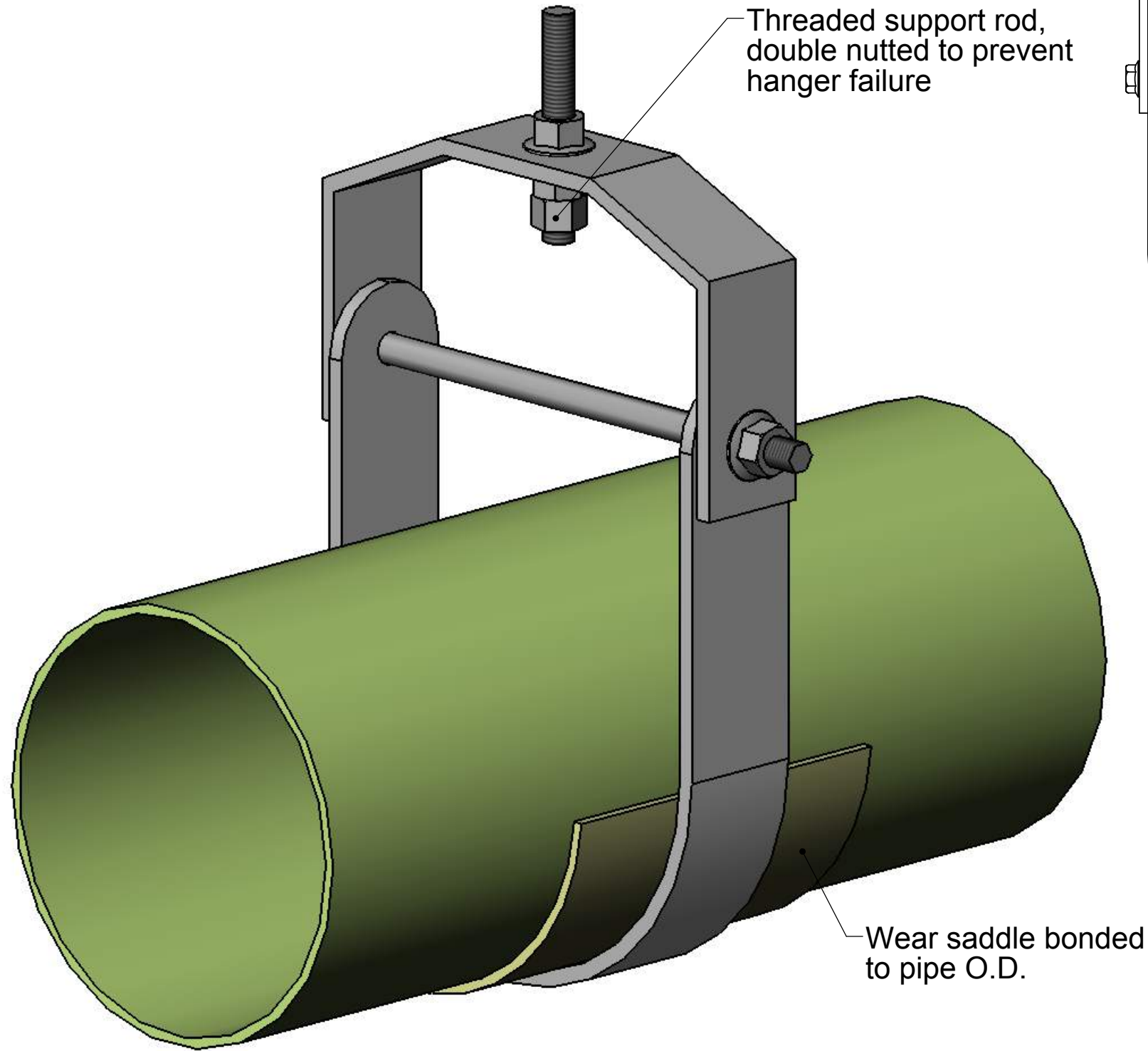
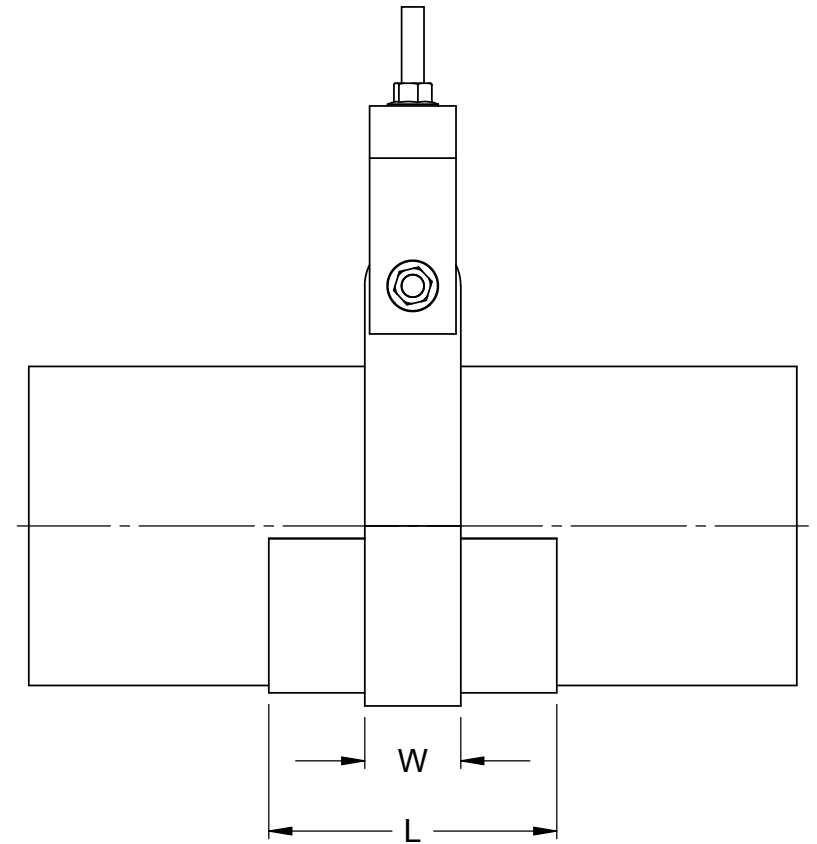
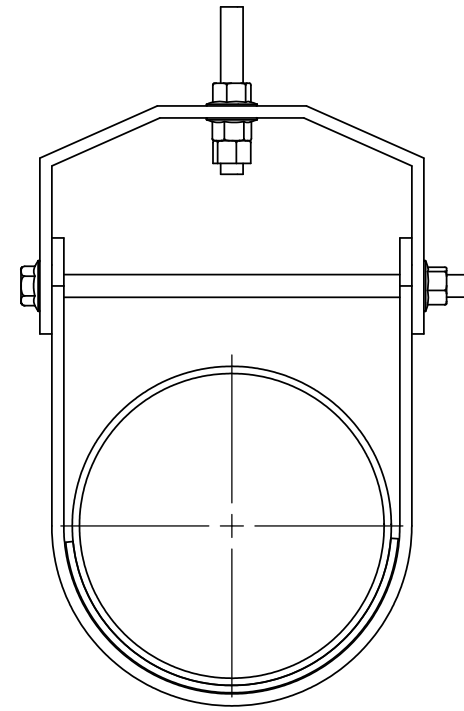


NOTES:



Threaded support rod, double nutted to prevent hanger failure

Wear saddle bonded to pipe O.D.



Pipe Support Saddle Length (L) – Minimum Steel Width (W)
 Use when circumferential contact less than 180°, or support steel width less than indicated minimum

Pipe Size (in)	CL-2030, RB-2530, Chem Thread, Z-Core		Red Thread II, Green Thread, Silver Streak, F-Chem, CL-1520, RB-1520	
	Min Steel Width (in)	Contact Angle 110 – 120°	Min Steel Width (in)	Contact Angle 170 - 180°
1"	7/8	3	7/8	2
1 1/2"	7/8	3	7/8	2
2"	7/8	4	7/8	4
3"	1-1/4	4	1-1/4	4
4"	1-1/4	4	1-1/4	4
6"	1-1/2	4	1-1/2	6
8"	1-3/4	5-5/8"	1-7/8	8
10"	1-3/4	8-3/8"	2-5/8	10
12"	2	8-3/8"	3-1/4	12
14"	2	8-3/8"	4	12
16"	-	-	4	12
18"	-	-	4	12
20"	-	-	4	12
24"	-	-	4	12

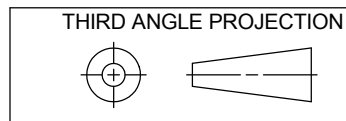
*Support saddles should be bonded or banded in position.
 *Industrial adhesive (ie. Liquid Nails) may be used for support saddles

Eastern Canada 1188 Welford Place Woodstock, Ontario N4S 7W3
Western Canada #2 - 9604 41st Avenue Edmonton, Alberta T6E 6G9
 Toll Free: (800) 410-4802
 Fax: (519) 537-8321
 frp@frpsolutions.com

Fibreglass Solutions Inc.

Clevis Hanger

FRP-H-1



CUSTOMER X	DATE 27 Jan 06
PROJECT Anchor, Support and Guide Design	DATE 28 Feb 06
DRAWN BY J.GANDER	DATE 18 Apr 06
CHECKED BY B.GOWLAND	
APPROVED B.GOWLAND	

TITLE	SIZE	DRAWING NO	REVISION
	-		-
SCALE	Not to Scale	WEIGHT	N/A lbs
			SHEET 1 OF 1